



CENTRE D'ART CONTEMPORAIN
LA SYNAGOGUE DE DELME

Press kit



CHRISTIAN HIDAKA ***MEETING HOUSE***

EXHIBITION

09.03.2012 - 19.05.2012

PREVIEW WITH THE ARTIST

FRIDAY 8 MARCH, 6PM

VISIT WITH CHRISTIAN HIDAKA

SUNDAY 17 MARCH, 4PM

CHRISTIAN HIDAKA

MEETING HOUSE

The Synagogue de Delme contemporary art centre is pleased to present Christian Hidaka's first solo exhibition at an art centre in France.

By exploring landscape painting, Christian Hidaka succeeds in renewing a very old genre in a very unique manner. In Delme, he is presenting several facets of the work he has been developing over the past ten years, which combines several motifs: deserts, caves and mountains. These create sprawling, unreal mental labyrinths, in which the eye meanders endlessly.

The breathtaking diversity of pictorial styles and techniques used by Christian Hidaka is the expression of an incredible independence of spirit, an intense, communicative joy of creation that has the power to send us on inner journeys, where painting serves as a passage.

Christian Hidaka's works draw from a thousand different sources. Japanese landscapes, science fiction worlds, psychedelia, surrealism, Renaissance painting... go beyond their apparent antagonisms to construct a representation of the world that has the ring of a promise of reconciliation.

Though his world is sometimes similar to a gentle hallucination, that is likely to make us forget reality, a threat intrudes here and there, like a call to order. The ambiguity of his compositions suggests that landscapes are just as much projections of inner subjectivity as they are places of confrontation, territories overrun by violence, war, conquest and appropriation, ground on which to leave an imprint.

The artist tirelessly observes the signs and marks that cultures sketch on their landscapes as they transform them. What do these signs tell us? What are they traces of? Whether we are roaming nature, walking through shopping centres or wandering around virtual worlds produced by the digital industry, we are given an incalculable number of interweaved cultural forms, codes and stories to glimpse.

Having no horizon or vanishing point, Christian Hidaka's paintings seem like they could go on endlessly, beyond the limits of the canvas, and they speak to us of a world whose non-linear chronology turns in on itself rather than pointing towards a hypothetical end.

Marie Cozette

The exhibition Meeting House presents a dozen paintings created from 2007 to 2012, as well as a painting that the artist will complete on-site in Delme. Christian Hidaka will be in Delme from 25 February to 8 March. A public meeting with the artist is scheduled for Sunday, 17 March at 4pm.

Image :
Christian Hidaka, *Canopy*, 2012
Oil tempera on linen, 143 X175 cm

BIOGRAPHY

CHRISTIAN HIDAKA

Born in 1977 in Noda, Japan, Christian Hidaka lives and works in London, United-Kingdom. He is represented by the Galerie Michel Rein, Paris. www.michelrein.com

Selected Solo Exhibitions

- 2012 *Souvenir*, Galerie Michel Rein, Paris, France
- 2011 *Red Desert*, Galerie Michel Rein, Paris, France
Waterfall At The Top Of The River, Max Wigram Gallery, London, UK
- 2010 Galerie Michel Rein, Paris, France
- 2008 Max Wigram Gallery, London, UK
- 2007 Patricia Low Contemporary, Gstaad, Switzerland

Selected Group Exhibitions

- 2012 *The Stairs*, Albus Greenspon Gallery, New York, USA
On the Beach, Galerie Commune, Tourcoing, France
BY YOU BY ME BY WE, Twelve Around One, London, UK
- 2011 *In the Gardens*, Utopian Slumps, Melbourn, Australia
THE FUTURE CAN WAIT: Polemically Small, Torrance Art Museum, Californie, USA
Walking Through... MUDAM, Musée d'Art Moderne Grand-Duc Jean, Luxemburg
- 2010 *La gamme Pérouse*, MOHLL148, Aubervilliers, France
John Moores Contemporary Painting Prize, Walker Art Gallery, Liverpool, UK
Summertime Love, Michel Rein, Paris, France
Panorama, Michel Rein, Paris, France
The Library of Babel- In and Out of Place, 176 Zabłudowicz Collection, London, UK
5th Anniversary Exhibition, Patricia Low Contemporary, Gstaad, Switzerland
- 2009 *Eat Me-Drink Me*, The Goss-Michael Foundation, Dallas, Texas, USA
Elements of Nature, The Weisman Art Museum, California, USA
- 2008 *Park Avenue*, Southampton City Art Gallery, Southampton, UK
Imaginary Realities, Max Wigram Gallery, London, UK
INSIDEOUT, Gallery Moriarty, Madrid, Spain
Pavillon du Royaume-Uni, Biennale de Pékin, Beijing, China
Art and Illusion: Selections from the Frederick R. Weisman Art Foundation, Roseville Arts!, Roseville, California, USA
Reflections from the Artist's Eye: Contemporary Art from the Frederick R. Weisman Art Foundation, Frederick R. Weisman Museum of Art, Pepperdine University, Malibu, California, USA
- 2007 *Off the Wall*, Rental Gallery, New York, USA
The Eclectic Eye: Selections of Fantasy and Illusion from the Frederick R Weisman Art Foundation, Contemporary Art Center, New Orleans, USA
The Eclectic Eye: Pop and Illusion, Taylor Museum, Colorado Springs Fine Arts Center, USA
- 2006 *Récurrences Dérobées*, Bétonsalon, Paris, France

PRACTICAL DETAILS

Wednesday-Saturday: 2-6pm, Sunday: 11am-6pm.

The Art Centre will be closed on May 1st.

Free entrance.

Guided Tour with Chistian Hidaka Sunday 17 March, 4pm.

Guided Tour every Sunday at 4pm.

LOCATION AND ACCES

Contemporary ART Centre
la synagogue de Delme
33 rue Poincaré F-57590 Delme
T +33(0)3 87 01 43 42
F +33(0)3 87 01 43 14
cac.delme@wanadoo.fr
www.cac-synagoguedelme.org

FROM PARIS (by train 90 mins):

TGV Est, get off at Metz or Nancy

FROM METZ (by car, 30 mins):

D955, formerly route de Strasbourg

FROM NANCY (by car, 30 mins):

N74 towards Château-Salins then D955 towards Metz



PRESS

Agathe Borgne
communication@cac-synagoguedelme.org
+33(0)3 87 01 43 42
Visuals available on request
Press kit downloadable on:
www.cac-synagoguedelme.org/presse

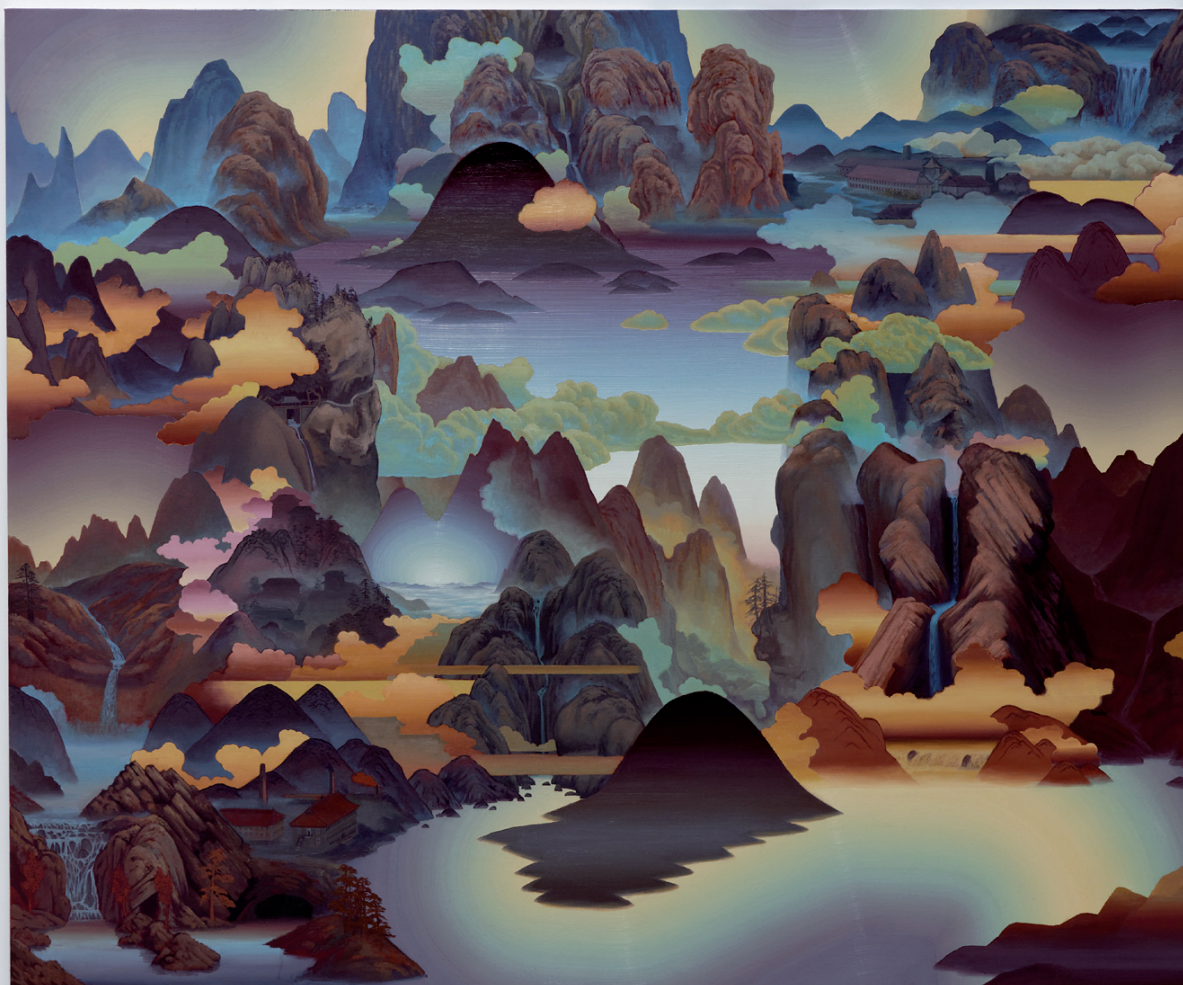




SELECTED WORKS



Canopy, 2012
oil tempera on linen
143 x 175 cm



Factory Mountains, 2012
oil on linen
207,5 x 250 cm



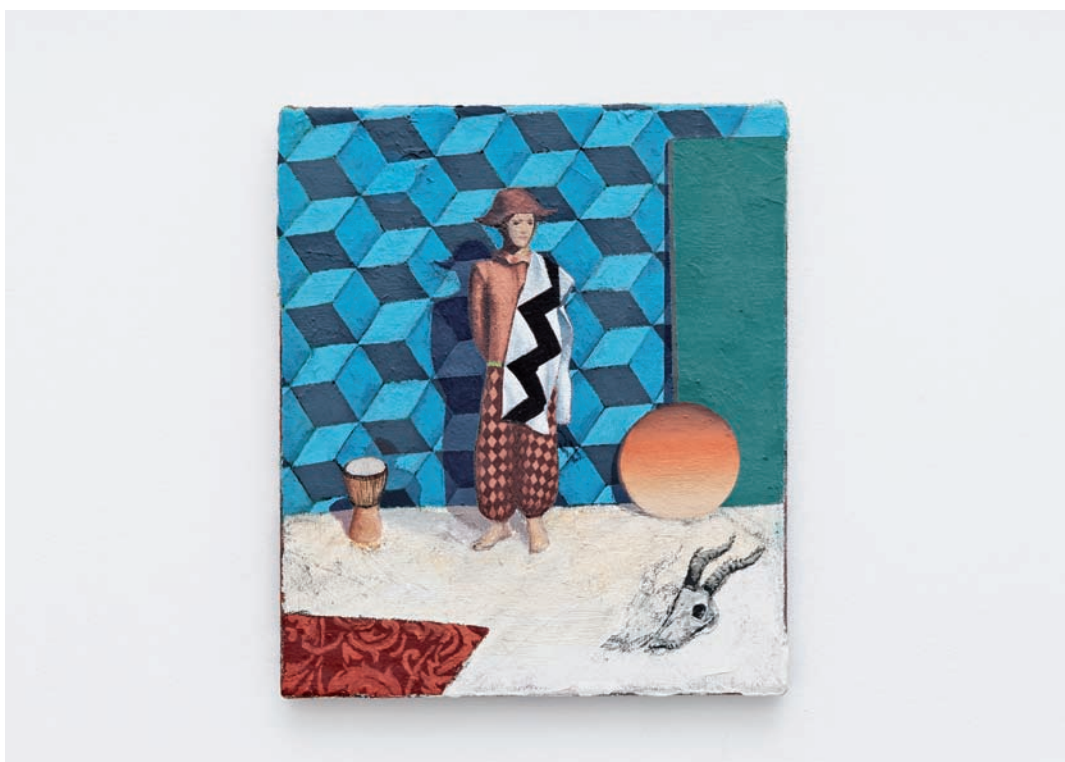
Hexagon Sun, 2011
tempera oil on linen
40 x 60 cm



Green Canopy, 2011
tempera oil on linen
40 x 50 cm



Small Desert Settlement, 2011
tempera oil on linen
46 x 60,5 cm



Untitled (Arlequin), 2011
tempera on linen
35,5 x 30,5 cm



Desert Hole 2 (second version), 2007
oil on canvas
199 x 250,4 cm
Collection MUDAM

UPCOMING EXHIBITION

SUSAN HILLER

Solo exhibition

June - September 2013

SCHIZOPHONIA

Guest curators: Anna Colin & Sam Thorne

October 2013 - January 2014

LINDRE-BASSE RESIDENCIES

ANN GUILLAUME

February - May 2013

SANTIAGO BORJA

July - September 2013

BOOKS

CHLOE MAILLET LOUISE HERVE

Attraction étrange, ed. JRP/Ringier

ERIC BAUDELAIRE

Anabases, ed. Archive Books

PUBLIC COMMISSION

BERDAGUER & PÉJUS

Gue(ho)st House



Gue(ho)st House, public commission by Berdager & Péjus, 2012
Synagogue de Delme Contemporary Art Centre
© Adagp, Paris / photo OHDancy

Inaugurated on 22 September 2012, *Gue(ho)st House* is an architecture-sculpture made out of an existing building. It offers new visitor reception spaces dedicated to mediation and documentation, and allows everyone to prolong their visit to the exhibitions at the art centre.

LA SYNAGOGUE DE DELME CONTEMPORARY ART CENTRE



Photo : O.H.Dancy

Catherine Jacquat
President

Marie Cozette
Director

Agathe Borgne
Administrator and Media Relations
Officer

Alain Colardelle
Registrar

The Centre for contemporary Art in Delme is located in a former synagogue, built in an Oriental style in the late nineteenth century. Not least among its special features are a dome, an arcaded entryway decorated with latticework, and windows with geometric stained glass.

The synagogue was partly destroyed during the Second World War. The outer walls survived, but the interior was rebuilt along stricter lines after the war. The synagogue was permanently de-consecrated in the early 1980s for lack of sufficient numbers of worshippers. The first art exhibition was held in 1993.

The many artists who have exhibited in this unusual venue in the past fifteen years, generating an identity and reputation for the art center both locally and internationally, include: Daniel Buren, Ann Veronica Janssens, Jean-Marc Bustamante, François Morellet, Tadashi Kawamata, Stéphane Dafflon, Delphine Coindet, Jeppe Hein, Jugnet & Clairet, Peter Downsbrough and, more recently, Katinka Bock, Julien Prévieux, Gianni Motti, Yona Friedman... All have developed a special view of the venue by creating site specific works.

In addition to three or four temporary shows presented in the former synagogue every year, the Delme art center manages an artist-in-residence program in the village of Lindre-Basse in the heart of the Lorraine regional park area.

The Delme synagogue, of modest size and located in a rural region of Lorraine, has always positioned itself as an art lab, a site of artistic exploration and production. The art center makes a concerted effort to establish a dialogue with all potential audiences, focusing on the local area.



d.c.a

La synagogue de Delme Centre for Contemporary Art is a member of DCA-Association pour le Développement des Centres d'Art.

La synagogue de Delme Centre for Contemporary Art is grateful for support from the French Ministry of Culture and Communication, the Lorraine contemporary art authority (DRAC), the regional and departmental governments of Lorraine and Moselle, and the municipality of Delme.

