

SALON  
INTERNATIONAL  
DE LA  
PEINTURE  
DE  
DELME



CENTRE D'ART CONTEMPORAIN  
LA SYNAGOGUE DE DELME

## **PRESS RELEASE**

### **SALON INTERNATIONAL DE LA PEINTURE DE DELME**

Marilou Bal  
Kévin Blinderman  
Nicolas Ceccaldi  
Audrey Couppé de Kermadec  
Angélique Heidler  
Charlotte Houette  
Jacent  
Renaud Jerez  
Ash Love  
Matthieu Palud  
Cédric Rivrain  
Louise Sartor

**EXHIBITION FROM FEBRUARY 8TH TO JUNE 8TH 2025  
OPENING ON FRIDAY FEBRUARY 7TH 2025 FROM 6PM  
ATTENDED BY THE ARTISTS**

*The Centre d'art contemporain - la synagogue de Delme would like to thank the artists and private lenders, galerie Crèveœur (Paris), Tonus (Paris), Fitzpatrick Gallery (Paris), galerie Edouard Montassut (Paris), Guillaume Lemuhot, Valentin Wattier and the municipal employees.*



Welcome to the *Salon International de la peinture de Delme*, an exhibition of paintings selected from among works by passionate artists, all concerned with the activity of painting today. Over the past decade, we have witnessed a so-called “return” of painting, that has accordingly triggered numerous exhibitions on the subject<sup>1</sup>. This one does not aim to be thematic or represent a school, and this will be understood by the very disparate styles and approaches of the artists shown: among the paintings presented, some adhere to rigorous figurative representation techniques while others are somewhat abstract, sometimes veering towards psychedelic forms. Others draw on technology, either through their mode of production, or because it is the subject of the work. Finally, some cast a critical eye over the economic regimes in place, carry a socio-political message, or challenge the historicity of pictorial art.

This eclectic presentation is nevertheless inspired by the format of painting salons, both those of local amateur artists’ associations, with their specific hanging styles and flexibility in their recognisable selections of artworks (often very inspiring ones), but also those, more historical salons organised by independent artists’ associations of the late nineteenth to early twentieth centuries, such as the first Impressionists’ Salon held at Nadar’s studio, whose 150th anniversary was celebrated in 2024<sup>2</sup>. It is a matter of paying tribute to all of the dynamics and energies continually exerted by artists to present their works to the public, often with their own means, when institutional pathways are not easy or immediate, for different reasons depending on the period. We note that many artists brought together here did not immediately resort to institutions to present their paintings. They first entered a parallel circuit of artist-run spaces thanks to invitations from other artists or independent exhibition curators in “project spaces” and other improvised locations, only identified by their peers, since they had few means of communication. The Salon International de la peinture de Delme thus presents itself as a collective exhibition in a similar vein to these various salon typologies, with no theme other than that of showing painting, while paying homage to all of these artists who were brave and savvy enough to create their own conditions for the presentation of their artworks.

---

1 Examples of recent painting exhibitions include: *Painting 2.0: Expression in the Information Age*, Museum Brandhorst, Munich (2015); *The Vitalist Economy of Painting*, Galerie Neu, Berlin (2018); *Stop Painting*, Fondazione Prada, Venice (2021); *Les Apparences*, CAC – A cent mètres du monde, Perpignan (2021); *Immortelle*, MOCO, Montpellier (2023); *Voir en peinture, La jeune figuration en France*, Musée d’art moderne et contemporain des Sables-d’Olonne (2023); *Between pixel and pigment. Hybrid painting in post-digital times*, Marta Herford et Kunsthalle Bielefeld (2024); *Le jour des peintres. 80 peintres contemporains de la scène française à la rencontre des visiteurs*, Musée d’Orsay, Paris (2024); *The Living End: Painting and Other Technologies, 1970–2020*, Museum of Contemporary Art, Chicago (2024); and *Ordinary People: Photorealism and the Work of Art since 1968*, MOCA, Los Angeles (2024).

2 See the exhibition *Paris 1874. Inventer l’impressionnisme*, Musée d’Orsay, Paris (2024).



# BIOGRAPHY OF THE ARTISTS

## **Marilou Bal**

Born in 1990 in Pessac (France). Graduated from the HEAD, Geneva, she lives and works in Geneva.

## **Kevin Blinderman**

Born in 1994 in Neuilly-sur-Seine (France). Graduated from ENSAPC, Paris-Cergy, he lives and works in Paris.

## **Nicolas Ceccaldi**

Born in 1983 in Canada. Graduated from HfBK Städelschule in Frankfurt, he lives and works between Vienna and Paris.

## **Audrey Couppé de Kermadec**

Born in 1992 in Paris. Journalist, writer, artist and performer, they live and work in Paris.

## **Angélique Heidler**

Born in 1992 in Paris. Graduated from the Slade School of Fine Arts in London, she lives and works in Ivry-sur-Seine (France).

## **Charlotte Houette**

Born in 1983 in Chambray-les-Tours (France). Graduated from ENSBA in Paris, she lives and works in Paris.

## **Jacent**

Duo made of Jade Fourès-Varnier and Vincent de Hoÿm. Born in 1984 in Paris and Narbonne (France). Graduated from ESAG Penninghen, Paris, they live and work in Paris.

## **Renaud Jerez**

Born in 1982 in Narbonne (France). Graduated from ENSBA in Paris, he lives and works in Paris.

## **Ash Love**

Born in 1996 in Bordeaux. Graduated from the HEAD, Geneva, they live and work in Marseille.

## **Matthieu Palud**

Born in 1983 in Perpignan (France). He lives and works in Paris.

## **Cédric Rivrain**

Born in 1977 in Limoges (France). He lives and works in Paris.

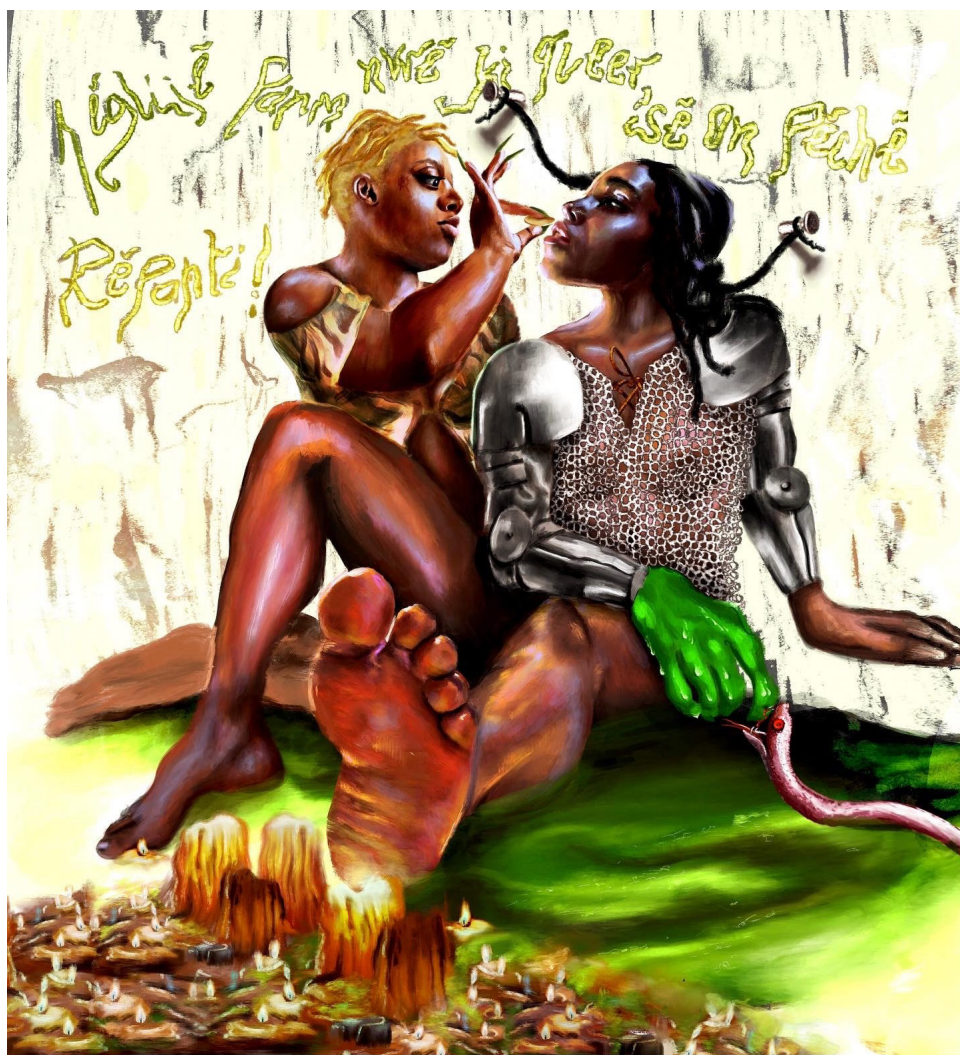
## **Louise Sartor**

Born in 1988 in Paris. Graduated from ENSBA in Paris, she lives and works in Paris.



## PRESS IMAGES

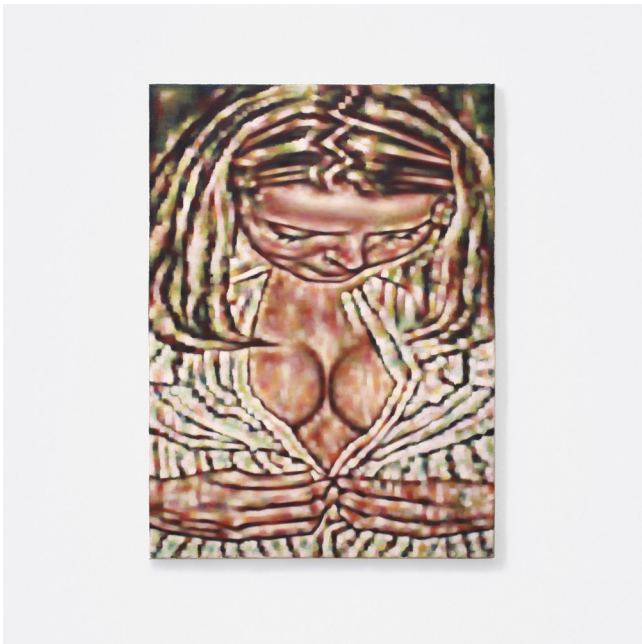
Exhibition views will be available after the opening. HD visuals can be downloaded from the press page at [www.cac-synagoguedelme.org](http://www.cac-synagoguedelme.org) (username and password provided upon request).



Audrey Couppé de Kermadec, *Négligé fanm nwé ki queer sé on péché, repanti !* (Négliger les femmes noires et queer est un péché, repentissez-vous), 2022, digital painting, print on FineArt Hahnemuhle Hemp paper, hemp, mounted on dibond 90 x 90 cm. Courtesy of the artist.



Cédric Rivrain, *Métro*, oil on linen, 195 x 130 cm, 2023.  
Private collection. Courtesy of Galerie Fitzpatrick, Paris  
and the artist.



Marilou Bal, *Girl in pajamas*, 2024, oil on canvas, 70 x 50 cm.  
Courtesy of the artist.



Kévin Blinderman, *An Erratic Jew*, oil on linen, 100 x 82 cm, 2023. Courtesy of the artist.



Nicolas Ceccaldi, *Ship in a harbor, shallow bay*, 2023, oil on canvas, stretcher, 80 x 100 cm. Courtesy of galerie Edouard Montassut, Paris and the artist.



Matthieu Palud, *Untitled*, 2024, acrylic on wood, 45 x 60 cm.  
Courtesy of the artist.



Charlotte Houette, *Secret egg / blue*, 2024, Flashe on canvas, with cardboard, 75 x 60 cm. Courtesy of High Art, Paris and the artist.





Jacent, *Naruto*, 2023, Soft pastel on wood, artist's frame, 120.8 x 75.6 cm. Courtesy of the artists.



Louise Sartor, *Incenso*, 2024, Gouache on cardboard, 46 x 24 cm. Courtesy of galerie Crèveœur, Paris and the artist. Photo: Alex Kostromin.



Ash Love, #6263cd (*out of office*), 2024, acrylic, raw canvas, colored pencil and oil on canvas, 160x100cm. From the series "message send failure (the connection was interrupted)", 2021-2024. Courtesy of the artist.

# TOURS

## WEEKLY TOUR

Guided tour of the exhibition *Salon International de la peinture de Delme*.

*Every Sunday at 4 pm.*

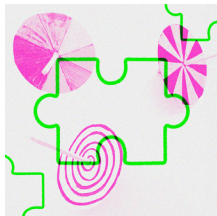
Free, reservation not required.

## TEACHER MEETING

Teachers will be welcomed by the head of visitor services, and Dorian Masiello, relay teacher for an introduction to the *Salon International de la peinture de Delme*.

*Date to be announced.*

# WORKSHOPS

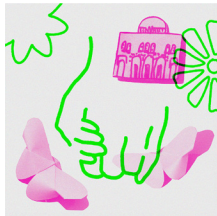


### PLAY-WORKSHOP IN PARTNERSHIP WITH THE MÉDIATHÈQUE DE DELME > CHILDREN AGED 7 AND UP

Play-workshop around the *Salon International de la peinture de Delme*.

*Wednesday February 19th 2025 from 9.30 am to 11 am.*

Free. Reservation required on 03 87 01 39 91.



### HAND-IN-HAND WORKSHOP > PARENTS AND CHILDREN AGED 5-12

For children aged 5 to 12 accompanied by their parents. The art centre is offering a workshop for children and their parents! Little ones and bigger ones can come and share a convivial moment playfully discovering works of art.

*Date to be announced.*

Free. Reservation required on 03 87 01 43 42.



### “BIG IDEAS SMALL HANDS” WORKSHOPS > FOR CHILDREN AGED 6-11

Led by the head of visitor services, and artist Katia Mourer, these workshops allow children to discover the current exhibition through a playful, concrete approach to the exhibited works.

*Dates to be announced.*

Free. Reservation required on 03 87 01 43 42.



### VISITE BOUT'CHOUX > FROM 1 TO 3 YEARS OLD IN PARTNERSHIP WITH THE EARLY CHILDHOOD RELAY OF THE COMMUNITY OF THE MUNICIPALITIES OF THE SAULNOIS

Discovery of the current exhibition *Salon International de la peinture de Delme* through a sensitive approach of the artworks: observation, listening, experimentation. An exploration filled with emotions and sensations !

*Date to be announced.*

Free. Reservation required to [rpe@cc-saulnois.fr](mailto:rpe@cc-saulnois.fr) / 03 87 01 17 88



## OFF-SITE EXHIBITION



### **CORNICELLO FROM LÉA CAMMARATA AND LOUISE TALARICO**

**FROM JANUARY 24TH TO APRIL 6TH 2025  
OPENING ON JANUARY 23RD 2025 AT 6PM**

### **OCTAVE COWBELL 4 RUE DU CHANGE 57000 METZ**

What's left is a full house that will soon be empty. Built brick by brick, decorated with thousands of knick-knacks that have been moved a hundred times throughout the house, the walls re-painted too. It was while exploring the house of her grandparents, Italian immigrants who arrived in France in the 1950s, that Léa Cammarata wondered how all the precious things they had brought back from their homeland and acquired in their adopted country were going to disappear, to be sorted, kept, thrown away and framed.

In the film industry, you set up a set that lives for a few months, weeks or days and then disappears. It's ephemeral, and we create what we call 'patinas' to age things and make them look as if they've lived and gone through layers of life. A bit like archaeologists who dig up objects to preserve them.

For this exhibition, Léa Cammarata has invited video artist Louise Talarico, with whom she has been working for a number of years on the fantasised and speculated life of objects. Both work in the fields of film industry and contemporary art.

They came together for this project based on the idea of a 'third territory' in which worlds have been displaced and then diluted. People marked by their land, who find themselves having to build elsewhere. An already inhabited elsewhere. It is here that fantasies, whether cultural or personal, become relics, like the objects left behind to bear witness to a living space.

Set design is a playground for bringing places and objects back to life. Using sheets of scenery as a starting point, they have created a transitional space between ruin and home. They propose both a fiction and the setting for that fiction, with Italy as the backdrop. The *Cornicello*, a symbol of good luck, is represented in the exhibition in several replicated forms. This obsessive variation, both in the gesture of making the object and in its display, is a way of experiencing its existence. It's a way of not forgetting, of remembering. Just like collectors. The plaster walls are followed by a dark room inhabited by ghostly voices whose tales straddle dream and reality. They propose a place that never existed, even though it attempts to represent their memories.

*Léa Cammarata (Metz, 1996) is a graduate of ENSAD in Nancy. She lives and works in Marseille.*

*Louise Talarico (Nancy, 1996) is a graduate of ERG, Brussels. She lives and works in Brussels.*



# LINDRE-BASSE RESIDENCY PROGRAM



Photo: OH Dancy



Since 2002, in close collaboration with the commune of Lindre-Basse and the Lorraine Regional Natural Park, the CAC - la synagogue de Delme has been running a programme of artist residencies in the former presbytery of Lindre-Basse, which was specially refitted as a studio.

The residency session offers the artist a chance to develop a specific project outside of his or her day-to-day context. The natural environment, the local population, the region's socio-economic data, its traffic, its potential in terms of history or tourism, or simply the structure of the studio offer many new possibilities to the resident artist.

*The artist residency programme is organised by the CAC - la synagogue de Delme in collaboration with the Lorraine Regional Natural Park and the village of Lindre-Basse.*

## UPCOMING RESIDENCIES



**MARCH - MAY 2025**

**Louise Mervelet and Paul Garcin**

Images: On the left: Paul Garcin, *Le Pouvoir de l'Amour, de la fascination et de Céline Dion*, video, 2023, screenshot.

On the right: Louise Mervelet, *spiritual hardcore*, 2022, printed on plastic-coated paper and soil, 3537. Photo: Louise Desplace.



**JUNE - AUGUST 2025**

**Emile Rubino**

Image: Emile Rubino, Exhibition view, *Bon Public*, with a contribution by Judith Geerts and a collaboration with the Cc Strombeek Kindergarten Atelier, Cc Strombeek, Grimbergen, 2023 Photo: Kristien Daem



# CAC - LA SYNAGOGUE DE DELME



CAC - la synagogue de Delme.

**Romain Leclère**  
Chair

**Benoît Lamy de La Chapelle**  
Director

**Fanny Larcher-Collin**  
Administration and communication

**Célestine Charlet (from January 2025)**  
Educational services and reception

**Alain Colardelle**  
Production manager and head technician

**Sarah Viollon**  
Educational services and reception

The Centre for contemporary Art in Delme is located in a former synagogue, built in an Oriental style in the late nineteenth century. Not least among its special features are a dome, an arcaded entryway decorated with latticework, and windows with geometric stained glass.

The synagogue was partly destroyed during the Second World War. The outer walls survived, but the interior was rebuilt along stricter lines after the war. The synagogue was permanently de-consecrated in the early 1980s for lack of sufficient numbers of worshippers. The first art exhibition was held in 1993.

The many artists who have exhibited in this unusual venue in the past thirty years, generating an identity and reputation for the art center both locally and internationally, include: François Morellet, Daniel Buren, Tadashi Kawamata, Ann Veronica Janssens, Marc Camille Chaimowicz, Katinka Bock, Julien Prévieux, Gianni Motti, Yona Friedman, Eric Baudelaire, Clovis Maillet and Louise Hervé, Marie Cool and Fabio Balducci, Susan Hiller, Clément Rodzielski, Jimmie Robert, Shilpa Gupta and more recently Jean-Luc Moulène, Merlin Carpenter, Camille Blatrix, Henrike Naumann, Magali Reus or Josephine Pryde.

All have developed a special view of the venue by creating site specific works. In addition to three or four temporary shows presented in the former synagogue every year, the Delme art center manages an artist residency program in the village of Lindre-Basse, in the heart of the Lorraine regional park area.

The Delme synagogue, located in a rural region of Lorraine, has always positioned itself as an art lab, a site of artistic exploration and production. The art center makes a concerted effort to establish a dialogue with all potential audiences, focusing on the local area.

**The CAC - la synagogue de Delme obtained the label « Contemporary art center of national interest » by the french Ministry of Culture.**



Inaugurated on 22 September 2012, *Gue(ho)st House* is an architecture-sculpture made out of an existing building. It offers visitor reception spaces dedicated to mediation and documentation, and allows everyone to prolong their visit to the exhibitions at the art centre.

It's signed by the artists Christophe Berdager and Marie Péjus.

CAC - la synagogue de Delme.

*Gue(ho)st House*, Berdager & Péjus, 2012.

© Adagp Paris 2012 / Berdager & Péjus.

Photo: OH Dancy.



## PRACTICAL INFORMATION

Salon International de la peinture de Delme from February 8th to June 8th 2025.  
Opening: Friday February 7th 2025 from 6pm attended by the artists.

Free shuttle from Metz for the opening of the exhibition. Departure at 5pm from Rue d'Austrasie, opposite the Hôtel Moderne, a stone's throw from Metz SNCF station (Schidler Tourist Bus). Return journey from Delme at 8.45pm (arriving around 9.30pm in Metz).  
Informations and booking : 03 87 01 43 42 or [info@cac-synagoguedelme.org](mailto:info@cac-synagoguedelme.org) Or book online.

From Wednesday to Saturday, 2 pm - 6 pm and Sunday 11 am - 6 pm.

Admission free. Guided tour every Sunday at 4 pm.

The CAC will be open on Friday April 18th, Thursday May 8th and Thursday May 29th, and will close on Thursday May 1st 2025.

### PRESS CONTACT

Fanny Larcher-Collin  
[communication@cac-synagoguedelme.org](mailto:communication@cac-synagoguedelme.org)  
+33(0)3 87 01 43 42  
Images available upon request.

### CONTACT AND ACCESS

CAC - la synagogue de Delme  
33 rue Poincaré F-57590 Delme  
+33(0)3 87 01 43 42  
[info@cac-synagoguedelme.org](mailto:info@cac-synagoguedelme.org)  
[www.cac-synagoguedelme.org](http://www.cac-synagoguedelme.org)

FROM PARIS (by train 90mins): TGV Est, get off at Metz or Nancy  
FROM METZ (by car, 30mins): D955, formerly route de Strasbourg  
FROM NANCY (by car, 30mins): N74 towards Château-Salins then D955 towards Metz

### PARTNERS

The *Cornicello* exhibition is part of the Région Grand Est's Émergence program, in partnership with the Perspective program at ENSAD in Nancy and the Octave Cowbell gallery in Metz.



The CAC - la synagogue de Delme obtained the label « Contemporary art center of national interest » from the french Ministry of Culture.

The CAC - la synagogue de Delme is supported by



The art center is a member of DCA / association française de développement des centres d'art, Arts en résidence - French national network, of BLA! – national association of mediation professionals in contemporary art and Plan d'Est - visual arts pole Grand Est.

